

Capital e-Deposit Installation Instructions (DRAFT)

Prerequisites

Windows Client PC Environment:

- 2.0 Mhz Pentium class computer with:
 - 32 Bit Processor (**64 Bit not qualified**)
 - 1 GB RAM (minimum)
 - 80 GB hard drive
 - USB 2.0 Adaptor (Must not be USB 1.0)
 - Windows XP, 2000 or Vista Operating Systems
 - Internet Explorer Version 6 min, recommended is Version 7
 - 17" color monitor
 - Silver Bullet Inc. Ranger interface for Scanner of your choice
 - Internet connection, 128k bandwidth

Required Programs

The following files are required in order for the scanner to operate properly:

- Sun Java 2 Runtime Environment JRE version 1.4.2.10 (minimum)
- Adobe Acrobat 5.0 (Minimum)
- Money Management Software for Exporting Transactions (Optional)

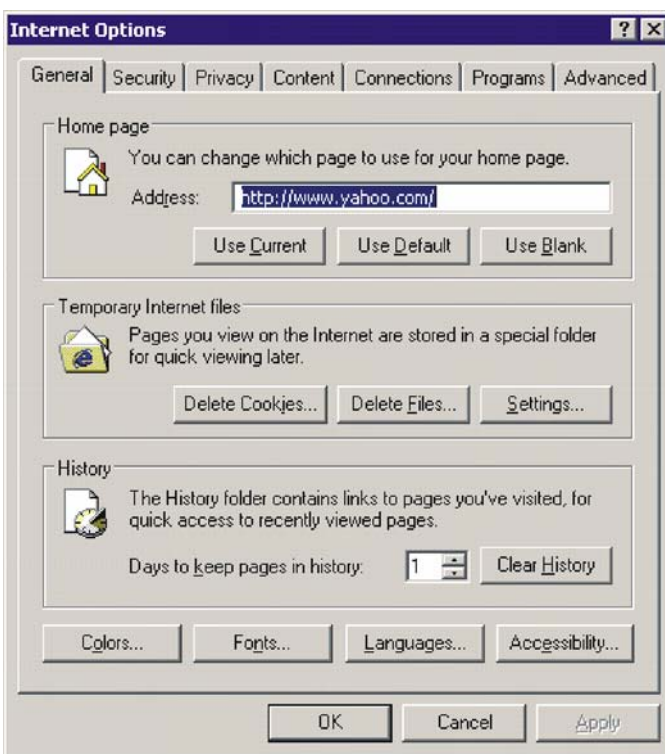
Security Settings

The requirements for allowing Active X controls for a specific site are as follows:

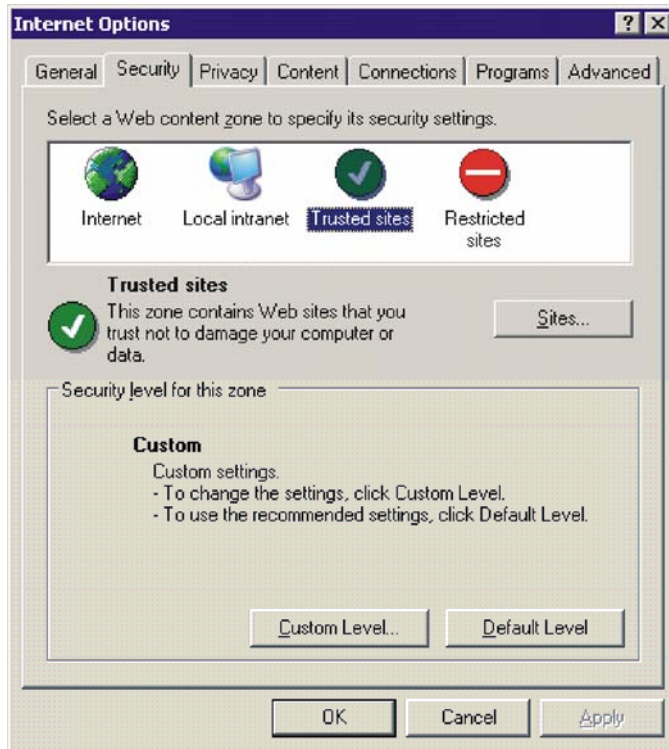
1. Start with the Internet Explorer window and select **Tools** then **Internet Options**



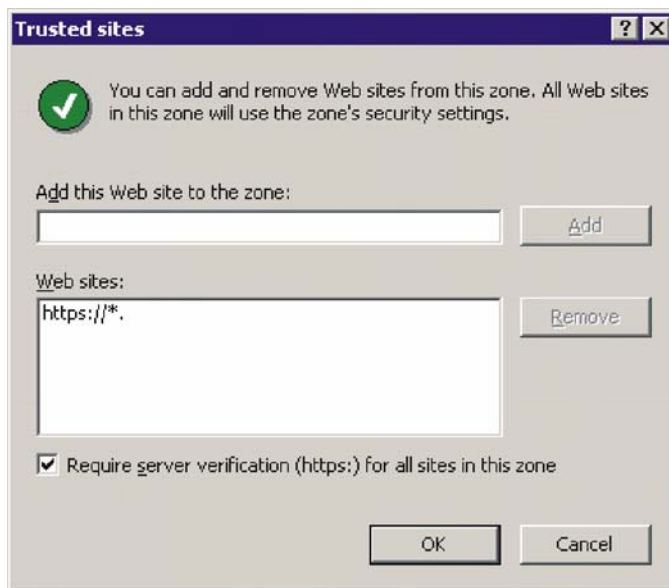
2. Select the **Security** tab



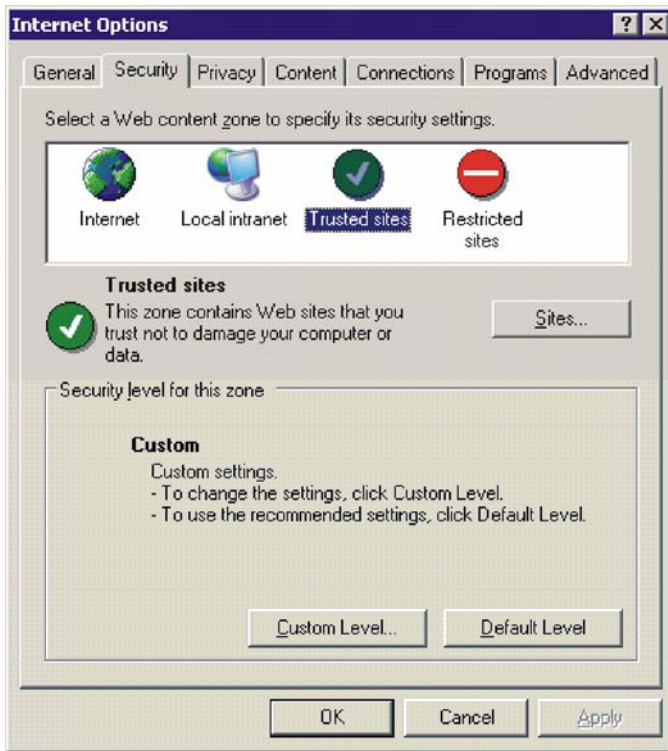
3. Tab to highlight the Trusted sites content zone and click the **Sites..** button



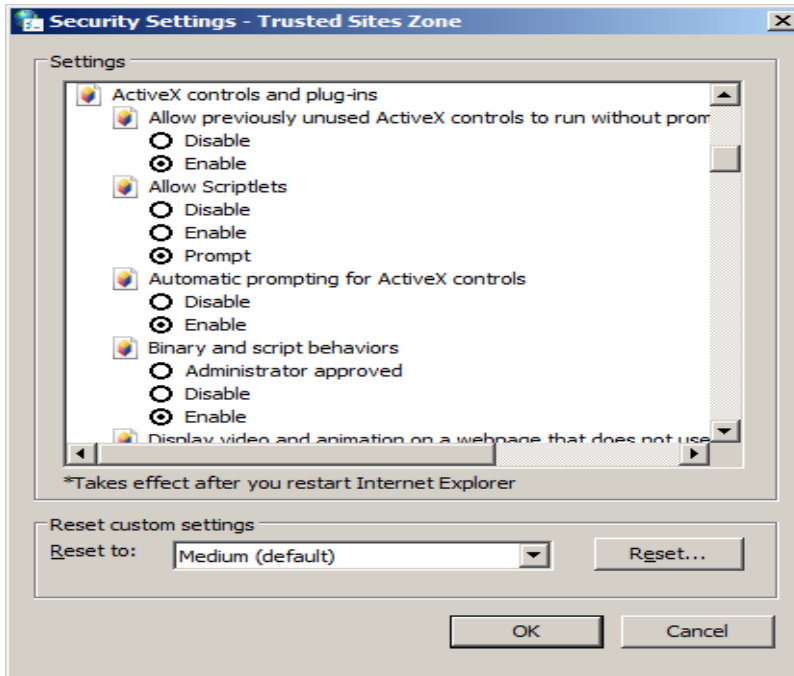
4. Add the following website as a trusted site then, click OK
https://*.secureaps.com

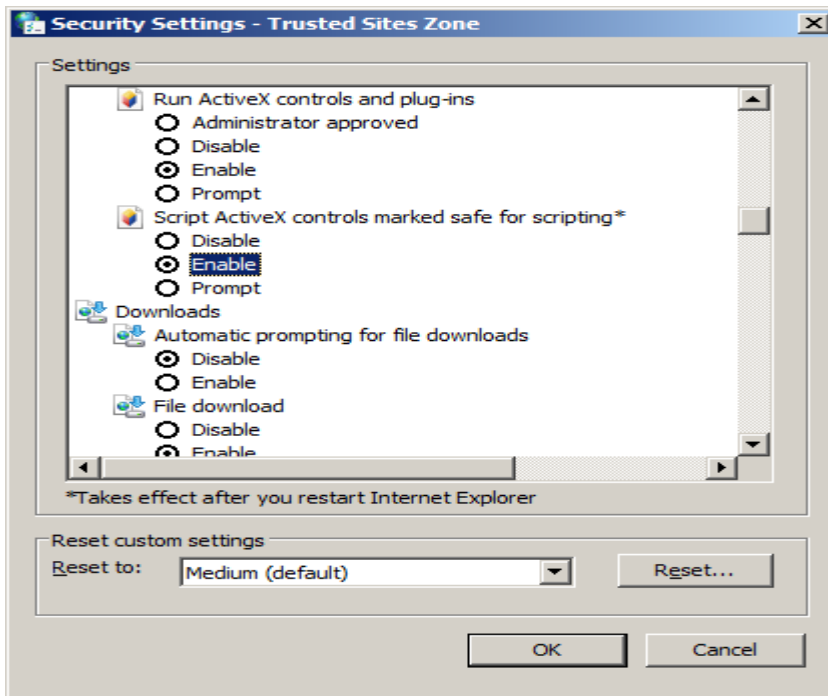
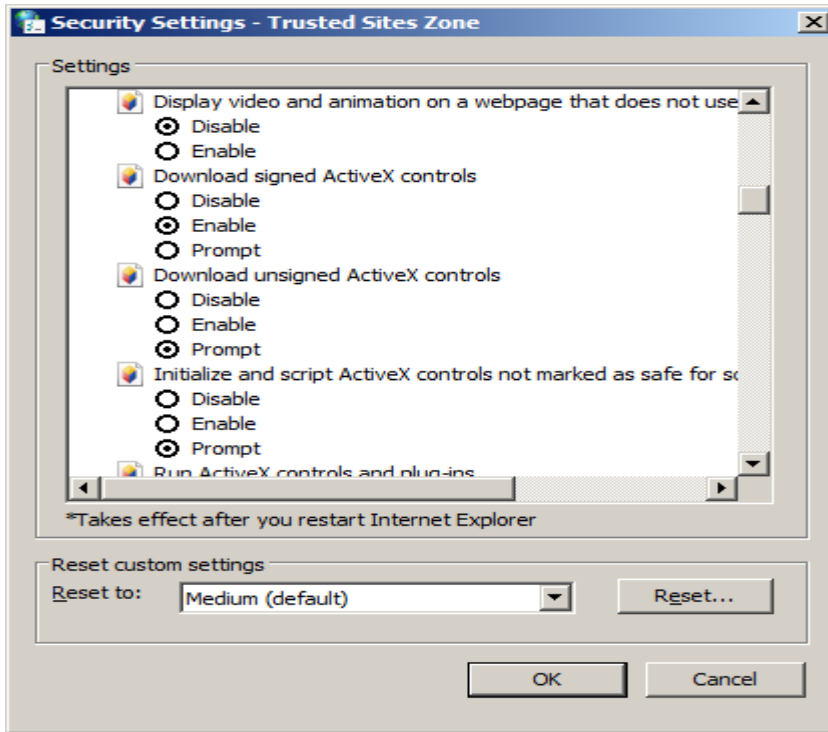


5. You are returned to the previous window, ensure you click the Trusted Sites Icon then select **Custom Level**.



6. Set the following options.



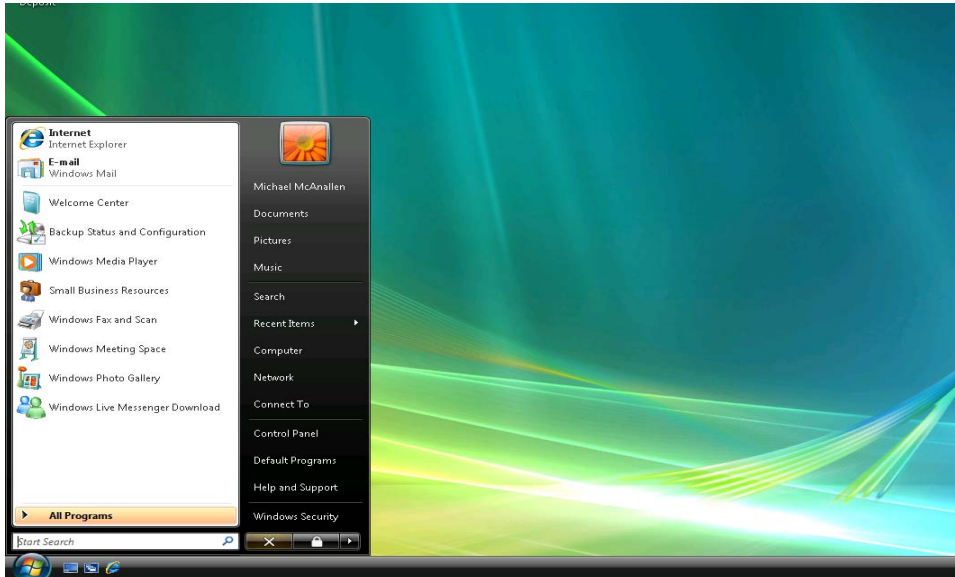


7. Click on the Advanced Tab
In the Browsing Section Uncheck the **Reuse Windows for Launching Shortcuts**
In the Security Section Uncheck the **Do Not Save Encrypted Pages to Disk**

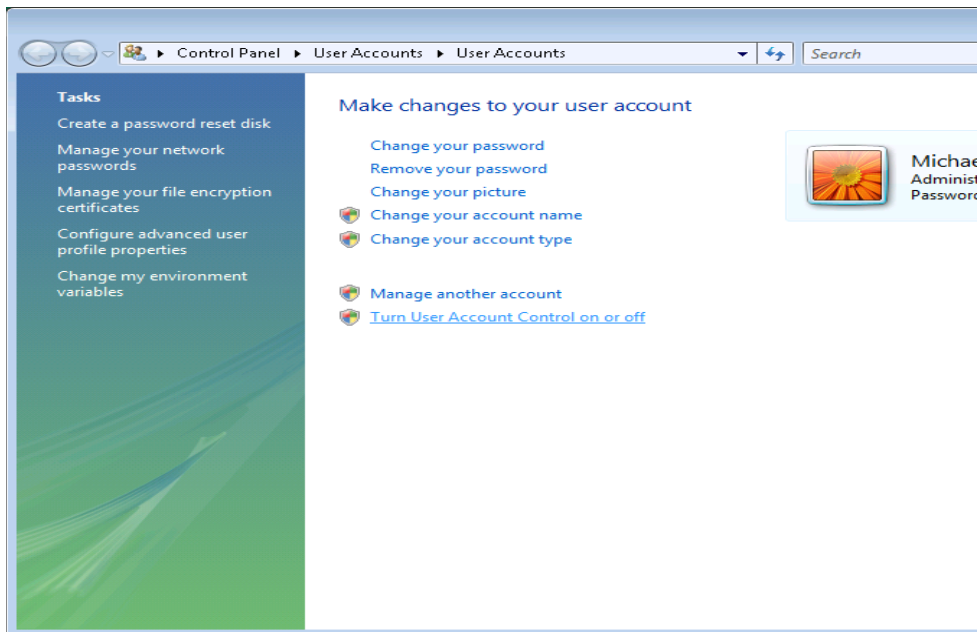
VISTA OPERATING SYSTEMS ONLY

By default the USER ACCOUNT CONTROL (UAC) setting may be turned on to make your computer more secure, this will need to be turned off for the installation of the scanner drivers in the next section. (If you make any changes here, please ensure to change the settings back when the scanner installation is complete)

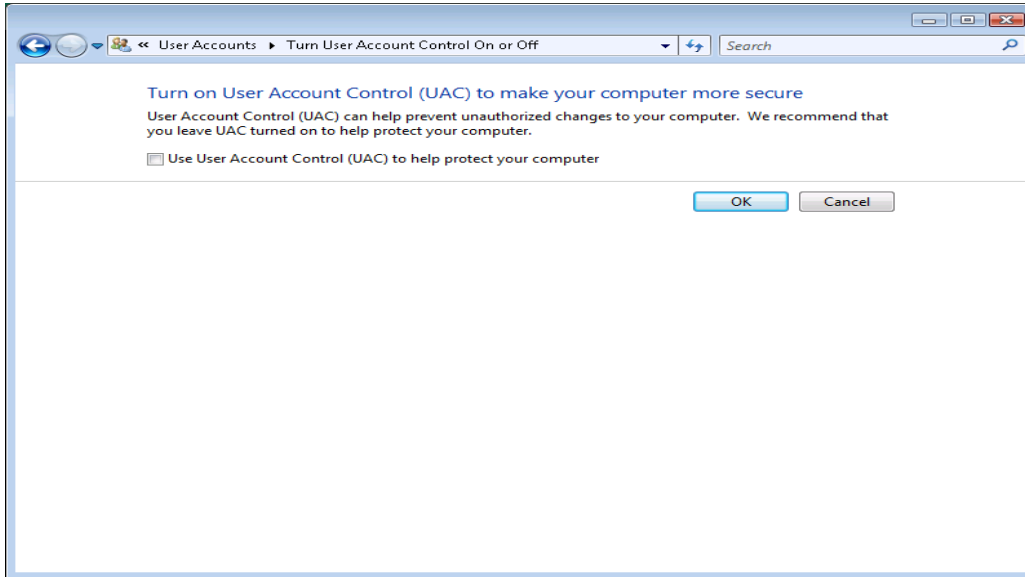
Click on Start button, then click the image in the upper right corner on the start box.



Then click on Turn User Account Control on or off.

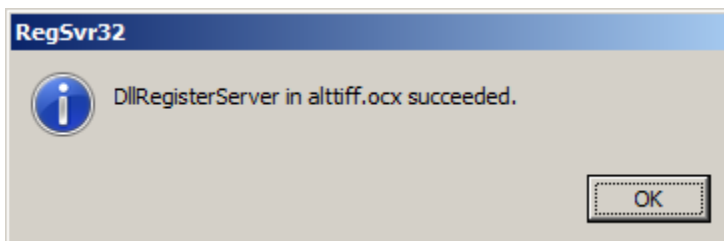


Make sure the Use User Account Control (UAC) to help protect your computer box is not checked and click OK.



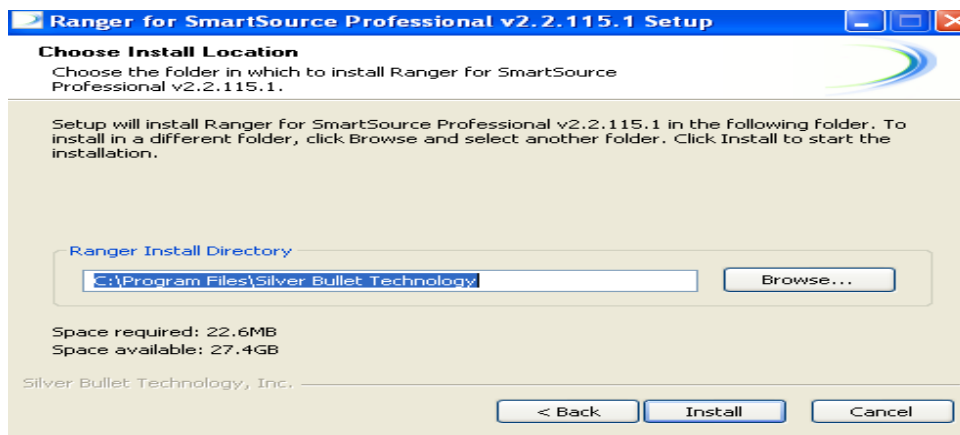
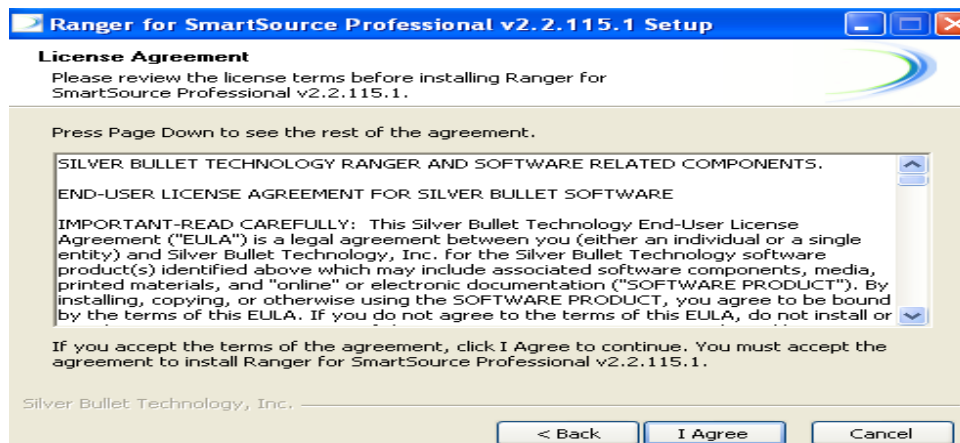
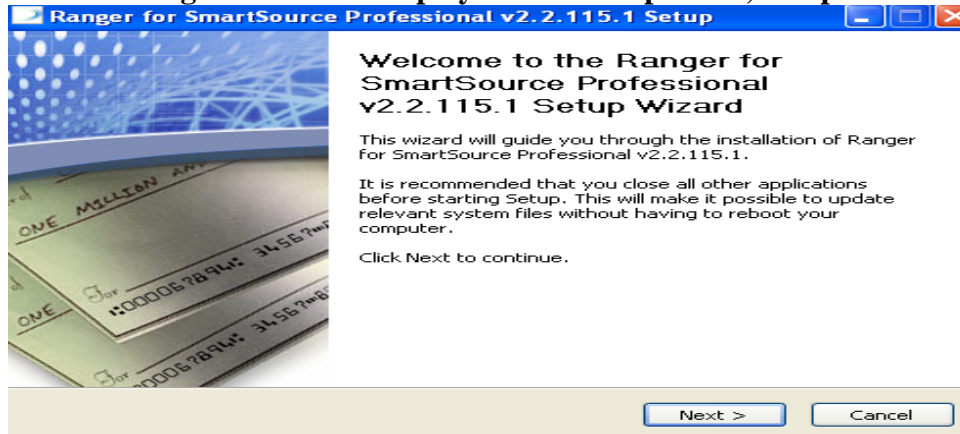
Scanner Driver Installation

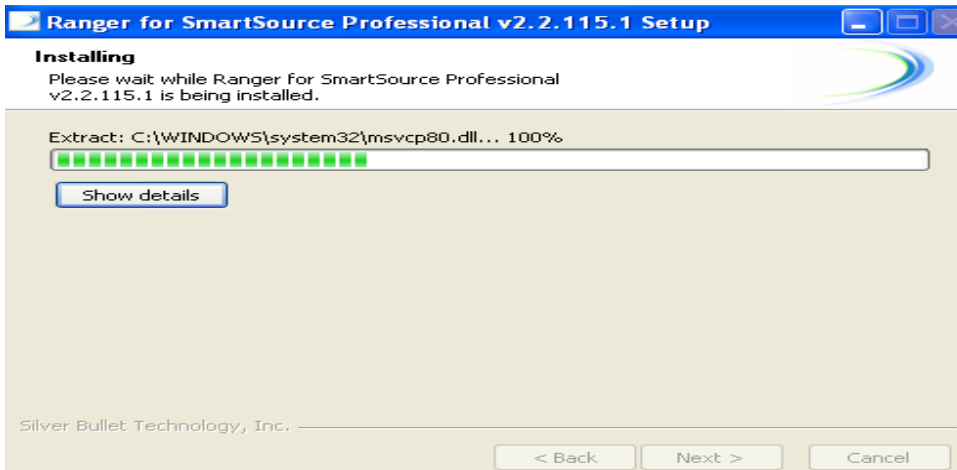
- 1) Do NOT connect the scanner to the workstation and ensure to reboot the workstation after completing these steps.
- 2) From the Capital Pacific Bank website, download and unzip the following Alternatif files to any folder on the workstation where the scanner will be attached; alttiff.ocx, alttifflicense.dat, alttiff.inf, alternatiff_licensed.cab, install.bat, setup.dat and the executable file for the scanner of your choice.
- 3) With the scanner unattached from the workstation, double click the Install.bat file then click OK to the following prompt
- 4) After the install is complete, plug the scanner in the USB port then reboot the workstation



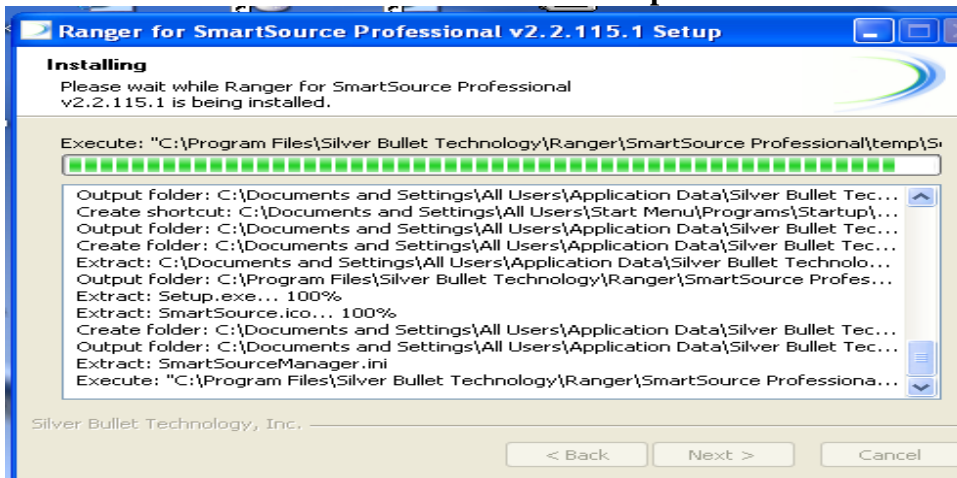
5) Double click the executable program to start the scanner driver installation

The following screen shots display the Wizard process, accept all defaults





Click on Show Details to watch the installation process



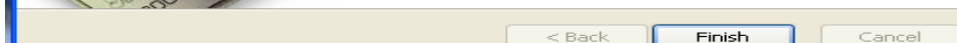
Click the Finish button



Completing the Ranger for SmartSource Professional v2.2.115.1 Setup Wizard

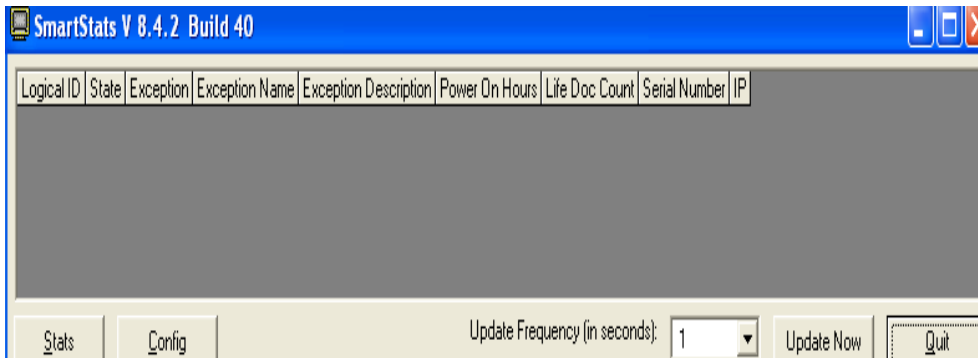
Ranger for SmartSource Professional v2.2.115.1 has been installed on your computer.

Click Finish to close this wizard.



SMART SOURCE SCANNER ONLY

Upon the completion of the Wizard, the SmartStats V8.4.2 .Build 40 will be available indicating the drivers are running. Okay to minimize this program



Click on the Tools in Internet Explorer. Go to Manage Add-ons. AlternaTIFF ActiveX should be enabled. If it is not you will need to do so before you can scan items.

